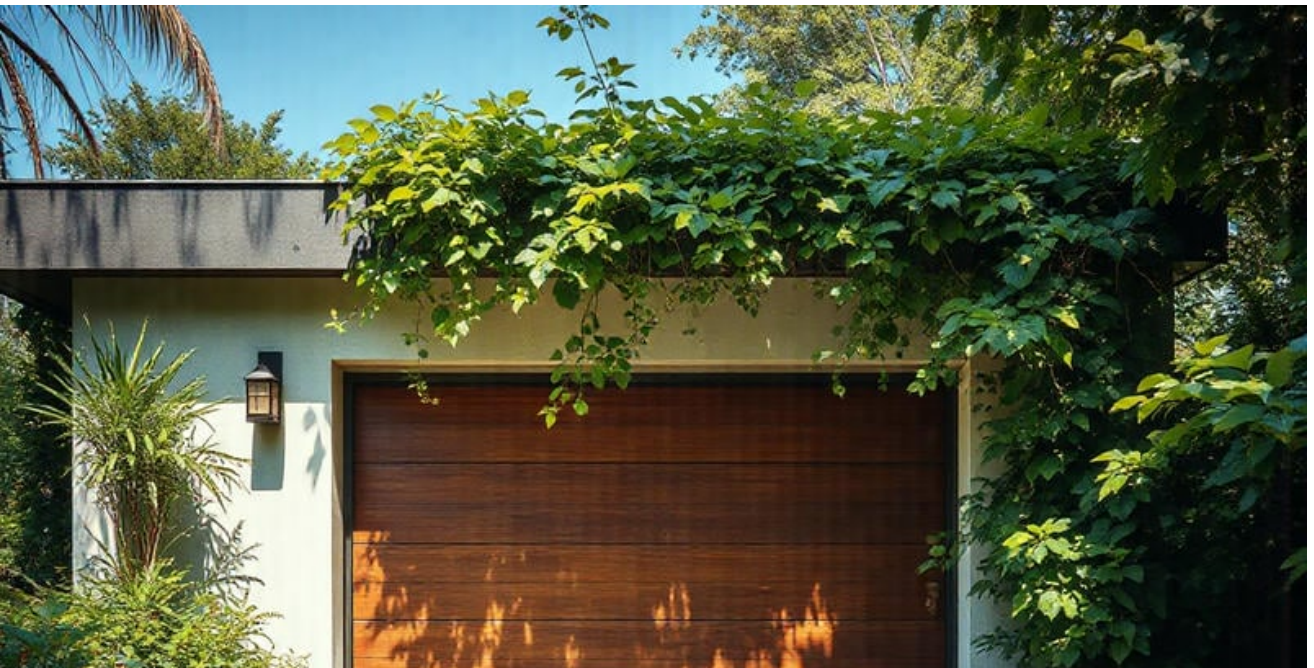




- **Reviewing Auto Reverse Mechanisms And Why They Matter**
Reviewing Auto Reverse Mechanisms And Why They Matter Testing Photo Eye Sensors With Quick Steps Learning About Manual Release Functions Understanding UL Standards For Garage Doors Checking Safety Labels And Ratings Before Purchase Adjusting Opener Force Settings Responsibly Evaluating Backup Power Options During Outages Verifying Emergency Release Handles For Accessibility Ensuring Child And Pet Safety Near Moving Parts Examining Industry Guidelines For Proper Installation Implementing Routine Safety Drills For Households Identifying Potential Hazards Through Visual Inspection
- **Inspecting Weather Seals For Energy Efficiency**
Inspecting Weather Seals For Energy Efficiency Lubricating Tracks And Rollers With Minimal Mess Checking Door Balance For Smooth Movement Monitoring Cable Tension For Safety Identifying Common Wear Points That Need Attention Creating A Simple Maintenance Schedule That Works Reading Opener Manuals For Basic Troubleshooting Verifying Photo Eye Sensor Alignment Regularly Removing Debris From Tracks For Better Operation Evaluating Loose Hinges Before They Fail Preserving A Clean Door Surface In All Climates Gathering Essential Tools For Simple DIY Checkups
- **About Us**



In the dynamic environment of a household garage, where modern design meets everyday functionality, safety becomes a paramount concern, especially when children and pets are involved. Garage doors, with their intricate mechanisms and moving parts, pose potential risks that require diligent attention to ensure the safety of our youngest and most vulnerable family members. Identifying common moving parts in garage doors is an essential step in mitigating these risks and fostering a safe home environment.

At first glance, a garage door may seem like a simple interface between your home's interior and the outside world. However, this seemingly straightforward structure comprises several complex components working in harmony. Replacing broken cables can restore proper door balance **garage door repair services** pricing. Among these are springs, rollers, cables, tracks, and panels-all of which must be understood to effectively safeguard children and pets from harm.

Springs play a crucial role in the operation of garage doors by balancing their weight and facilitating smooth opening and closing. These high-tension components can be particularly hazardous if they malfunction or break due to their substantial stored energy. It is vital for homeowners to regularly inspect springs for signs of wear or damage and to employ professional services for any necessary repairs or replacements.

Rollers and cables work alongside springs to guide the door along its tracks. While usually out of direct reach when properly installed, these elements can cause injury if tampered with or if they become damaged over time. Ensuring that rollers move smoothly within their tracks without obstruction reduces the likelihood of accidents caused by sudden jerks or derailments.

The movement path itself-the track-is another area demanding vigilance. Keeping tracks clear from debris not only ensures seamless door operation but also minimizes potential pinch points where small hands or paws might inadvertently find themselves trapped during door movement.

Garage door panels may not seem as threatening as other components; however, understanding their potential impact is crucial. When these large sections come down unexpectedly due to mechanical failure or human error, they can inflict serious injury on anyone caught beneath them. Installing sensors that detect objects in the path of closing doors can prevent such unfortunate incidents by automatically reversing the motion upon detection.

In addition to technical measures like regular maintenance checks and sensor installations, fostering awareness among family members is equally important. Educating children about the dangers associated with playing near garage doors instills cautionary behavior early on. Simple rules-such as staying away from moving doors or never attempting to manually operate them-can significantly reduce risk factors.

Moreover, ensuring that remotes are kept out of reach from curious little hands prevents unintended activations that could lead to accidents involving unaware pets lounging nearby or children playing close by.

Ultimately, while garages serve as convenient storage spaces and entryways into our homes, they require thoughtful management regarding safety precautions around moving parts. By identifying critical components such as springs, rollers, cables-and instilling vigilant practices-we create safer environments where children can explore freely without undue risk from one of modern life's ubiquitous conveniences: the automated garage door system.

In conclusion, prioritizing child and pet safety near garage doors involves both technical understanding and practical application-an endeavor well worth undertaking for peace of mind in protecting what truly matters most: our loved ones' well-being within our homes' confines.

Key Components and Functionality of Auto Reverse Systems —

- Historical Development and Evolution of Auto Reverse Technology
- Key Components and Functionality of Auto Reverse Systems
- Safety Benefits of Installing Auto Reverse Mechanisms
- Common Issues and Troubleshooting Tips for Auto Reverse Systems
- The Role of Regulations and Standards in Ensuring Safety
- Selecting the Right Garage Door System with Effective Auto Reverse Features

Ensuring the safety of children and pets around moving parts is a crucial concern for any household. Both young children and animals are naturally curious, often drawn to new sights and sounds without an understanding of the potential dangers they may pose. As responsible caregivers, it is our duty to mitigate these risks by taking proactive measures to create a safe environment.

Moving parts can be found in various everyday objects, from household appliances like washing machines and fans to outdoor equipment such as lawnmowers and bicycles. These items, while essential for daily living, present significant hazards if not properly managed. Children, with their exploratory nature, might reach out to touch or play with these objects without recognizing the danger they represent. Similarly, pets may inadvertently step into harm's way while investigating or playing in areas where moving parts are present.

To safeguard against these risks, awareness is the first line of defense. Educating ourselves about potential hazards allows us to anticipate situations that could lead to accidents. Once we have identified areas of concern, implementing physical barriers becomes imperative. For instance, using safety gates or covers can prevent access to dangerous areas or machinery when not in use.

Moreover, supervision cannot be understated. An attentive caregiver can intervene before a child or pet gets too close to moving parts. However, constant supervision is not always feasible; hence teaching children about the dangers associated with certain objects becomes vital as they grow older. Simple rules like keeping hands away from spinning blades or avoiding cords and belts should be instilled early on.

For pet owners, training can serve as a protective measure too. Teaching pets commands such as "stay" or "leave it" can help keep them away from hazardous zones. Additionally, confining pets during times when machinery is being used ensures they remain safe.

Modern technology also offers solutions through devices equipped with sensors that detect movement and automatically shut down if something unexpected enters their path—a useful feature for high-risk equipment like garage doors or automatic gates.

In conclusion, ensuring child and pet safety near moving parts demands vigilance and proactive planning. By fostering awareness through education and employing preventive strategies such as barriers and supervision alongside technological aids where possible, we

create an environment where children and pets can explore safely without compromising their well-being. Ultimately, safeguarding our loved ones requires continuous effort but promises peace of mind knowing they've been protected from potential harm.

Posted by on

Posted by on

Safety Benefits of Installing Auto Reverse Mechanisms

Ensuring the safety of children and pets around garage doors is a concern that cannot be overstated. Garage doors, with their significant size and weight, present potential hazards that demand attention, particularly considering the curious nature of children and the unpredictable movements of pets. Fortunately, modern technology and thoughtful design have brought about essential safety features aimed at mitigating these risks.

One of the most critical safety features is the automatic reversal system. This mechanism is designed to detect obstructions in the door's path-whether it be a child, pet, or object-and promptly reverse its direction to prevent injury or damage. The automatic reversal system operates primarily through sensors located near the ground on either side of the door frame. These sensors emit an invisible beam; if broken by an obstruction as the door descends, they

signal for an immediate stop and reversal of movement. This feature is not just crucial; it has been mandated by federal law in many regions due to its effectiveness in preventing accidents.

Another important feature is manual control options that allow homeowners to quickly halt or reverse a door's movement should someone become trapped beneath it or caught in its mechanisms. Wall-mounted buttons should be installed out of reach from small children to prevent accidental operation. Additionally, remote controls can be equipped with lockout systems that disable functionality when not needed-for example, during playtime when kids are likely to roam freely around the garage area.

Furthermore, modern garage doors often come with pinch-resistant panels and tamper-resistant brackets designed explicitly to protect fingers from being caught between sections as they move up or down. These design considerations help ensure that even if little hands find their way into potentially dangerous spots, they won't suffer harmful consequences.

Maintenance also plays a pivotal role in ensuring safety around garage doors. Regular inspections for wear and tear on springs, cables, rollers, and other components are necessary to ensure everything functions smoothly without unexpected failures that could lead to hazardous situations. Many homeowners may choose professional servicing annually for peace of mind-a small price compared to dealing with mechanical malfunctions that could cause serious injuries.

Finally, educating family members about safe practices around garage doors can significantly enhance security measures offered by technological advancements alone. Children should understand never to run under a moving door or play with remote controls unsupervised while pets should ideally be kept clear whenever possible during operation times.

In conclusion, multiple layers contribute towards making garage doors safer for families-ranging from legally mandated technical safeguards like automatic reversal systems through smart designs such as pinch-resistant panels all supplemented by vigilant maintenance routines alongside proactive education efforts within households themselves-all working together harmoniously towards creating environments where our loved ones remain secure even amidst everyday interactions involving potentially perilous equipment like garage doors.



Common Issues and Troubleshooting Tips for Auto Reverse Systems

Ensuring the safety of children and pets around garage doors is an essential aspect of home safety, particularly given the size and weight of these moving parts. Installing a garage door requires not only technical precision but also a comprehensive understanding of safety measures to protect vulnerable family members. Adopting best practices during installation can help prevent accidents and injuries, making your home a safer environment for everyone.

One of the primary considerations in ensuring child and pet safety near garage doors is the choice and placement of sensors. Modern garage doors are equipped with photoelectric sensors that detect movement and automatically reverse the door if something obstructs its path. During installation, it's crucial to position these sensors no more than six inches above the ground. This height ensures that even small pets or toddlers will be detected by the system, preventing accidental entrapment.

Another important practice is to conduct regular maintenance checks on the garage door's hardware components. This includes inspecting springs, cables, rollers, and pulleys for signs of wear or damage. A malfunctioning component can lead to unexpected door movements, posing a risk to children or pets playing nearby. Regularly lubricating moving parts also helps maintain smooth operation and reduces noise levels, which could otherwise startle animals into unsafe areas.

Moreover, educating family members about garage door safety is key to preventing accidents. Children should be taught never to play under or near moving doors and to keep their hands away from any moving parts. It's also advisable to install wall-mounted button controls at least five feet above the ground to keep them out of reach for young children.

Additionally, employing advanced technology such as smart garage door openers can enhance safety measures significantly. These devices often come with features like smartphone alerts when the door operates unexpectedly or has been left open for too long. Such alerts allow homeowners to take immediate action if they suspect an unsafe situation involving children or pets.

Finally, setting up barriers or enclosures around certain areas near the garage can provide an extra layer of protection. This physical barricade prevents unsupervised access by curious toddlers or wandering pets when adults are not present.

In conclusion, ensuring child and pet safety around garage doors involves careful planning during installation coupled with ongoing vigilance afterward. By adhering to best practices

such as installing effective sensors, performing regular maintenance checks, educating household members about potential dangers, leveraging smart technologies, and using physical barriers when necessary, families can enjoy peace of mind knowing they have minimized risks associated with these ubiquitous yet potentially hazardous household fixtures.

The Role of Regulations and Standards in Ensuring Safety

Ensuring the safety of children and pets around moving parts is a responsibility that cannot be overstated. Whether it's household appliances, vehicles, or machinery in the backyard or garage, these moving mechanisms can pose significant risks if not properly managed. One of the most effective ways to mitigate these dangers is through regular maintenance and safety checks.

Regular maintenance refers to the routine inspection and servicing of equipment to ensure it operates smoothly and safely. This practice is crucial because it helps identify potential hazards before they become serious problems. For instance, a loose screw in a washing machine or a malfunctioning gate hinge might seem trivial but could lead to accidents if left unattended. By scheduling regular maintenance checks, you can catch these issues early on and address them promptly.

In addition to preventing accidents, regular maintenance extends the life of your equipment. Machines that are well-maintained tend to last longer and perform better. This longevity not only saves money in terms of repairs and replacements but also ensures that devices remain safe for everyday use. For families with children and pets, this reliability is invaluable as it reduces the likelihood of unexpected malfunctions that could lead to injury.

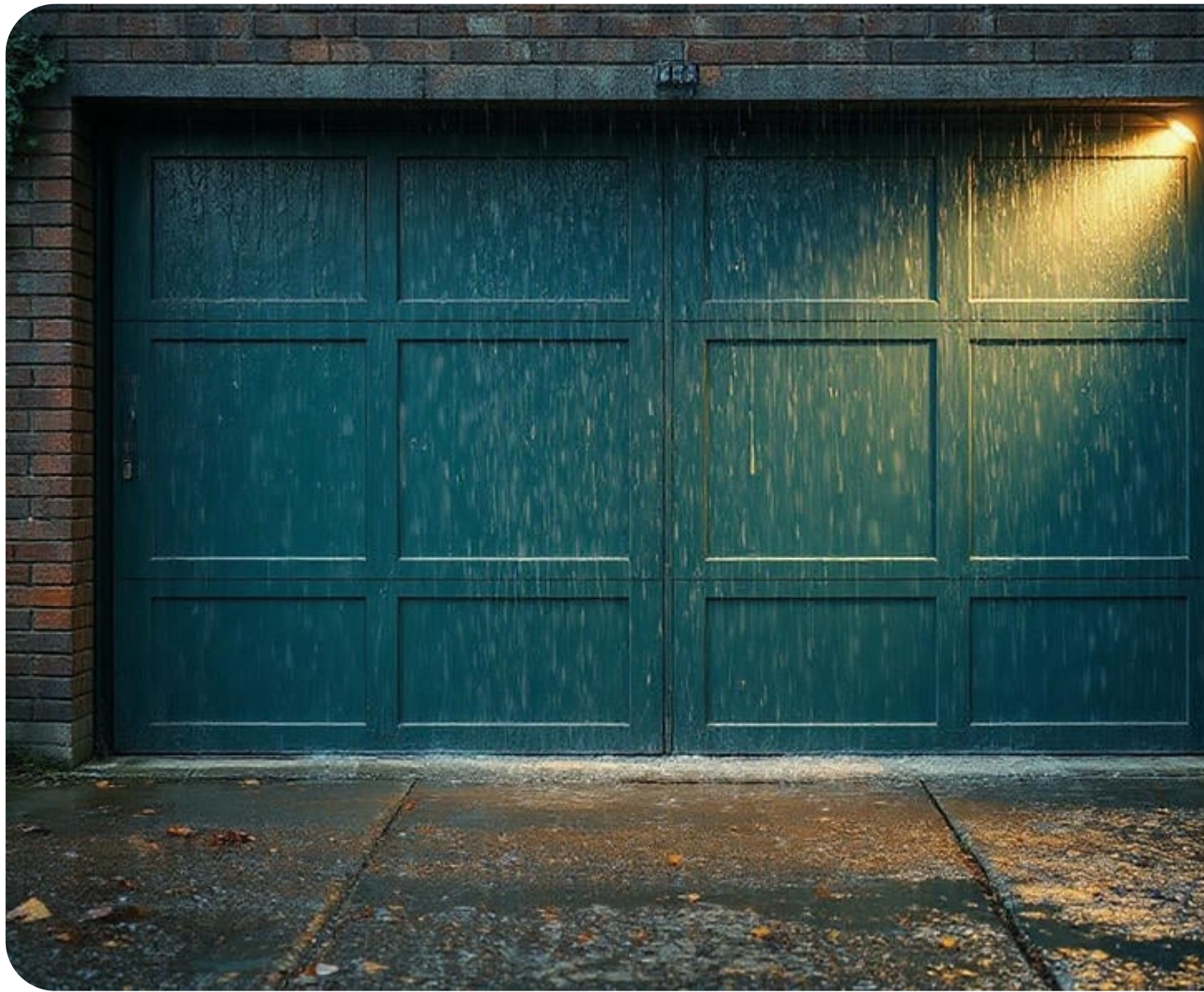
Safety checks go hand-in-hand with regular maintenance but focus specifically on identifying potential danger zones around moving parts. Conducting thorough safety audits involves examining all areas where children or pets might interact with machines. For example, checking that guards are securely fastened over fans or ensuring that lawnmowers have

proper safety shields can prevent curious fingers or paws from getting too close.

Moreover, safety checks should include educating family members about the risks associated with certain appliances or tools. Teaching children about the importance of staying away from running machines or showing them how some devices work can demystify these objects while instilling respect for their potential dangers.

For pet owners, special attention should be given to areas where animals roam freely. Simple measures like securing cords out of reach or using pet gates to block off hazardous zones can significantly reduce risks. It's also wise to observe your pet's behavior around new equipment; curious cats and dogs might require additional precautions until they learn safe boundaries.

Ultimately, ensuring child and pet safety near moving parts requires vigilance, education, and proactive care through regular maintenance and safety checks. While it's impossible to eliminate all risks entirely, consistent efforts in maintaining equipment and fostering an environment of awareness help create a safer home for everyone involved. By prioritizing these practices, you protect not just your loved ones but also contribute to a culture of safety that values prevention over reaction—a mindset essential in safeguarding those who depend on us most.





Selecting the Right Garage Door System with Effective Auto Reverse Features

Garage doors are an essential component of many homes, providing convenience and security. However, they also pose significant safety risks, particularly to children and pets who may not understand the dangers associated with moving parts. Educating family members about garage door safety is crucial in ensuring that these potential hazards are minimized.

Firstly, it's important to recognize the allure that a garage door holds for young children. Its large size and mechanical movement can be fascinating, often tempting kids to play around or under it. To prevent accidents, parents should consistently teach their children about the importance of staying away from the garage door when it's in operation. Demonstrations can be effective; show them how quickly and forcefully a door can move, emphasizing that it is not a toy.

Pets require similar precautions. While they may not comprehend verbal warnings as children do, keeping your pets safe involves ensuring they are never left unattended in the garage when the door is moving. Installing pet-safe sensors on your garage door opener can provide an additional layer of security by stopping the door if an obstruction is detected.

Another critical aspect of safety education involves understanding and utilizing the various safety features already built into modern garage doors. Families should familiarize themselves with photo-eye sensors-these devices detect movement beneath a closing door and automatically reverse its direction. Regularly test these sensors to ensure they function correctly; malfunctioning equipment can negate this vital protection.

Moreover, setting rules for using remote controls and wall panels is essential. These devices should always be kept out of reach of young children. Consider installing a lock-out switch on wall panels to prevent unauthorized use or accidental activation by curious little hands.

Routine maintenance checks cannot be overstated in their importance to safety education. Encourage family members to participate in these checks-testing balance, inspecting springs for wear and tear, and ensuring cables are intact-all contribute towards preventing unexpected malfunctions.

Finally, fostering open communication about garage door safety within your household reinforces its significance. Create an environment where questions about safety procedures are welcomed and addressed promptly. Reinforce positive behavior with praise when family

members adhere to established guidelines.

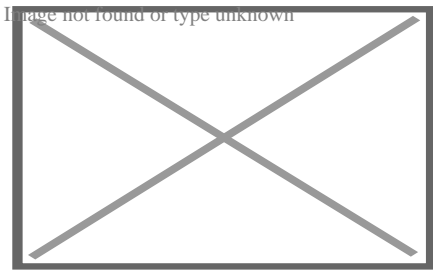
In conclusion, educating family members about garage door safety is more than just sharing information; it's about creating habits that protect our loved ones from harm's way every day. By instilling awareness and practicing preventative measures diligently, we ensure that our homes remain safe environments for both our children and pets alike.

About garage door opener



This article **needs additional citations for verification**. Please help improve this article by adding citations to reliable sources. Unsourced material may be challenged and removed.

Find sources: "Garage door opener" – news · newspapers · books · scholar · JSTOR (April 2015) *(Learn how and when to remove this message)*



A residential garage door opener. The motor is in the box on the upper-right.

A **garage door opener** is a motorized device that opens and closes a garage door controlled by switches on the garage wall. Most also include a handheld radio remote control carried by the owner, which can be used to open and close the door from a short distance.

The electric opener

[edit]

The electric overhead garage door opener was invented by C.G. Johnson in 1926 in Hartford City, Indiana.^[1] Electric Garage Door openers did not become popular until Era Meter Company of Chicago offered one after World War II where the overhead garage door could be opened via a key pad located on a post at the end of the driveway or a switch inside the garage.^[2]

As in an elevator, the electric motor does not provide most of the power to move a heavy garage door. Instead, most of door's weight is offset by the counterbalance springs attached to the door. (Even manually operated garage doors have counterbalances; otherwise, they would be too heavy for a person to open or close them.) In a typical design, torsion springs apply torque to a shaft, and that shaft applies a force to the garage door via

steel counterbalance cables. The electric opener provides only a small amount of force to control how far the door opens and closes. In most cases, the garage door opener also holds the door closed in place of a lock.

The typical electric garage door opener consists of a power unit that contains the electric motor. The power unit attaches to a track. A trolley connected to an arm that attaches to the top of the garage door slides back and forth on the track, thus opening and closing the garage door. The trolley is pulled along the track by a chain, belt, or screw that turns when the motor is operated. A quick-release mechanism is attached to the trolley to allow the garage door to be disconnected from the opener for manual operation during a power failure or in case of emergency. Limit switches on the power unit control the distance the garage door opens and closes once the motor receives a signal from the remote control or wall push button to operate the door.^[3]

The entire assembly hangs above the garage door. The power unit hangs from the ceiling and is located towards the rear of the garage. The end of the track on the opposite end of the power unit attaches to a header bracket that is attached to the header wall above the garage door. The powerhead is usually supported by punched angle iron.

Recently another type of opener, known as the jackshaft opener, has become more popular.^[when?] This style of opener was used frequently on commercial doors but in recent years has been adapted for residential use. This style of opener consists of a motor that attaches to the side of the torsion rod and moves the door up and down by simply spinning the rod. These openers need a few extra components to function safely for residential use. These include a cable tension monitor, to detect when a cable is broken, and a separate locking mechanism to lock the door when it is fully closed. These have the advantage that they free up ceiling space that an ordinary opener and rail would occupy. These also have the disadvantage that the door must have a torsion rod to attach the motor to.

Types

[edit]

There are six types of garage door openers:

1. Chain drive openers. These have a chain (similar to a bicycle's) that connects the trolley to the motor.
2. Belt drive openers use a rubber belt in place of a chain.
3. Screw drive openers have a long screw inside the track. The trolley connects to this screw.
4. Direct drive openers have the motor installed inside the trolley and use a gear wheel to guide the trolley along a fixed chain.
5. Jackshaft openers mount on the wall at either end of the torsion bar.
6. Roller openers automate roller doors, which roll upward and coil around a drum above the garage entrance, maximizing space.

These openers typically feature two tines that slide into a drum wheel within the roller door mechanism, engaging to smoothly lift or lower the door.

Remote control

[edit]

The first wireless garage door openers were invented and developed by two US inventors at the same time, one in Illinois and the other in Washington state, around 1930. They were unknown to each other.^[4]

The first garage door opener remote controls were simple and consisted of a simple transmitter (the remote) and receiver which controlled the opener mechanism. The transmitter would transmit on a designated frequency; the receiver would listen for the radio signal, then open or close the garage, depending on the door position. The basic concept of this can be traced back to World War II. This type of system was used to detonate remote bombs. While novel at the time, the technology ran its course when garage door openers became popular. While the garage door remote control transmitter is low power and has limited range, its signal can be received by other, nearby, garage door openers. When two neighbors had garage door openers, then opening one garage door might open the neighbor's garage door as well.

The second stage of the wireless garage door opener system solved the opening-the-neighbor's-garage-door problem. The remote controls on these systems transmitted a digital code, and the receiver in the garage responded only to that code. The codes were typically set by eight to twelve DIP switches on the receiver and transmitter, so they allowed for $2^8 = 256$ to $2^{12} = 4,096$ different codes. As long as neighbors used different codes, they would not open each other's garage doors. The intent of these systems was to avoid interference with nearby garage doors; the systems were not designed with security in mind. Intruders were able to defeat the security of these systems and gain entry to the garage and the house. The number of codes was small enough that even an unsophisticated intruder with a compatible remote control transmitter could just start transmitting all possible codes until he found one that opened the door. More sophisticated intruders could acquire a black box master key that automatically transmitted every possible code in a short time. An even more sophisticated method is known as a replay attack. The attacker would use a code grabber, which has a receiver that captures the remote's digital code and can retransmit that digital code at a later time. The attacker with a code grabber would wait nearby for the homeowner to use his remote, capture the code, and then replay the code to open the door when the homeowner was gone. Multicode openers became unpopular in areas where security was important, but due to their ease of programming, such openers are often used to operate such things as the gates in gated apartment complexes.

An intermediate stage of the garage door opener market eliminated the DIP switches and used remotes preprogrammed to one out of roughly 3.5 billion unique codes. The receiver would maintain a security list of remotes to which it would respond; the user could easily

add the unique remote's code to the list by pressing a button on the garage door opener while activating the remote control. A large number of codes made the brute force try-all-possible-digital-codes attacks infeasible, but the systems were still vulnerable to code grabbers. For user convenience, these systems were also backward compatible with the older DIP switch remote codes, but adding an old technology remote to the security list made the garage door opener vulnerable to a brute force attack to find the DIP switch code. The larger code space approach was an improvement over the fixed DIP switch codes but was still vulnerable to the replay attack.

The third stage of garage door opener technology uses a frequency spectrum range between 300-400 MHz and rolling code (code hopping) technology to defeat code grabbers. In addition to transmitting a unique identifier for the remote control, a sequence number and an encrypted message are also sent. Although an intruder could still capture the code used to open a garage door, the sequence number immediately expires, so retransmitting the code later would not open the garage door. The encryption makes it extremely difficult for an intruder to forge a message with the next sequence number that would open the door. Some rolling code systems are more involved than others. Because there is a high probability that someone will push the remote's button while not in range and thus advance the sequence number, the receiver does not insist the sequence number increase by exactly one; it will accept a sequence number that falls within a narrow window or two successive sequence numbers in a much wider window. Rolling code technology is also used on car remote controls and with some internet protocols for secure sites.

The fourth stage of garage door opener systems is similar to third stage, but it is limited to the 315 MHz frequency. The 315 MHz frequency range avoids interference from the land mobile radio system (LMRS) used by the U.S. military.

The following standards are used by units manufactured by Chamberlain (including LiftMaster and Craftsman):

Dates	System	Color of programming button and LED on unit	Color of LED on remote*
1984–1993	8-12 DIP switch on 300-400 MHz	white, gray, or yellow button with red LED	red
1993–1997	Billion Code on 390 MHz	green button with green or red LED	green
1997–2005	Security+ (rolling code) on 390 MHz	orange or red button with amber LED	amber or none
2005–present	Security+ (rolling code) on 315 MHz	purple button with amber LED	none
2011–present	Security+ 2.0 (rolling code) on 310, 315, and 390 MHz	yellow button with amber LED and yellow antenna wires	red or blue

* Does not apply to keyless entry keypads or universal remotes.

Recent Chamberlain garage door openers that have Security+ 2.0 features also use a special serial protocol on wired connections rather than a simple switch closure.^[5]

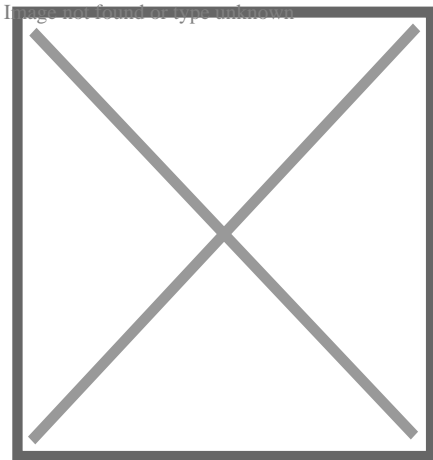
The following standards are used by units manufactured by Overhead Door Corporation and its subsidiary The Genie Company†:

Dates	System
1985–1995	9–12 DIP switch on 360, 380, or 390 MHz ^[6] ^[7]
1995–2005	Intellicode/CodeDodger (rolling code) on 390 MHz
2005–present	Intellicode/CodeDodger (rolling code) on 315 MHz
2011–present	Intellicode 2/CodeDodger 2 (rolling code) on 315 and 390 MHz

† *Note: There are no standard color codes for the learn button or LED on units manufactured by Overhead Door or Genie. All accessories made for later versions of Genie Intellicode and Overhead Door CodeDodger are backward compatible with previous generations of Intellicode and CodeDodger.*

Cloning garage door opener remotes

[edit]



A typical photo of both the outer case and inner circuit of a garage door opener remote control.

Many garage door opener remote controls use fixed-code encoding which use DIP switches or soldering to do the address pins coding process, and they usually use pt2262/pt2272 or compatible ICs. For these fixed-code garage door opener remotes, one can easily clone the existing remote using a self-learning remote control duplicator (copy remote) which can make a copy of the remote using face-to-face copying.

Additional features

[edit]

Additional features that have been added over the years have included:

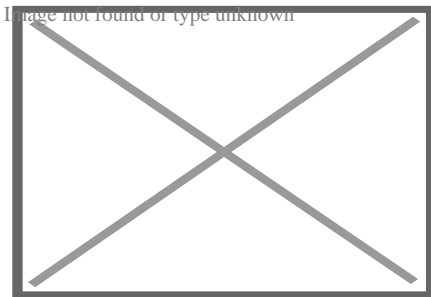
- Automatic courtesy lights that turn on when the door opens (or via motion sensors) and automatically turn off after a preset delay
- A remote lockout feature, which turns off the radio receiver while one is on vacation or away for an extended time.
- The availability of accessories has increased, including such features as wireless keypads, key chain remotes, and solenoid-operated deadbolts to lock the door itself.
- Automatic door closing feature, which after a fixed time by the owner, closes the garage door to prevent theft.

More sophisticated features are also available, such as an integrated carbon monoxide sensor to open the door in case of the garage being flooded with exhaust fumes. Other systems allow door activation over the Internet to allow home owners to open their garage door from their office for deliveries.

Another recent innovation in the garage door opener is a fingerprint-based wireless keypad. This unit attaches to the outside of the garage door on the jamb and allows users to open and close their doors with the press of a finger, rather than creating a personal identification number (PIN). This is especially helpful for families with children who may forget a code and are latchkey kids.

Safety

[edit]



Electric eye for safety

The garage door is generally the largest moving object in a home. An improperly adjusted garage door opener can exert strong and deadly forces and might not reverse the garage door in an emergency. The manufacturer's instructions provide guidance to the user on the proper adjustment and maintenance of the opener.

Garage door openers manufactured and installed in the United States since 1982 are required to provide a quick-release mechanism on the trolley that allows for the garage door to be disconnected from the garage door opener in the event of entrapment.^[8] Garage door openers manufactured since 1991 are also required to reverse the garage door if it strikes a solid object.^{[9][10]}

In the United States, the Consumer Product Safety Improvement Act of 1990 required that automatic residential garage door operators manufactured on or after 1 January 1991 conform to the entrapment protection requirements of the 1988 version of ANSI/UL standard 325.^[11] A requirement for redundant entrapment-prevention devices was added in 1993; such a system can use an electric eye, a door edge sensor, or any other device that provides equivalent protection by reversing the travel of the closing door if an object is detected in its path.^{[12][13]}

California Senate Bill No. 969

[edit]

In California, Senate Bill No. 969 requires that any automatic residential garage door opener that is manufactured for sale, sold, offered for sale, or installed in a residence to have a battery backup function that is designed to operate when activated because of an electrical outage.^[14] The bill went into effect on July 1, 2019. Under the bill, any automatic garage door opener that is in violation is subject to a civil penalty of \$1000.

The bill was passed by Gov. Jerry Brown on Sept. 21, 2018, in response to the 2017 California Wildfires in which at least 5 individuals lost their lives because they could not open their garage door when the power went out.^[15]

The Door and Access Systems Manufacturers Association International opposed the bill arguing that garage door openers with backup batteries require regular maintenance and that the bill should be amended to make this clear. In addition, they said that "garage door openers with backup batteries are not designed to serve as life safety devices, and should not be relied upon to prove a means of egress from a garage during an electrical outage."^[16]

The bill passed, despite most garage doors having a release pull cord.

References

[edit]

- ¹ ^ Robert J Girod (2014). "Garage Door Openers - High-tech Burglary". *Advanced Criminal Investigations and Intelligence Operations: Tradecraft Methods, Practices, Tactics, and Techniques*. Taylor and Francis. p. 90. ISBN 9781482230741.
- ² ^ "Aids To Modern Living - Garage Doors". *Popular Science*: 137. December 1946.
- ³ ^ Castro, Diane. "The Complete Garage Door System". Regency Conference Center. Retrieved 10 March 2020.
- ⁴ ^ "Widely Separated Inventors Invent Garage Door Openers By Radio Impulses". *Popular Science*: 32. February 1931.
- ⁵ ^ "Will my older accessories work with the new line of Security+ 2.0 garage door openers?". *alldaygaragerepair.com*. Retrieved 2017-06-23.

6. ^ *Willmes, Dave. "My Overhead Door Opener Doesn't Work with this Universal Remote". www.overheaddooronline.com. Retrieved 20 October 2016.*
7. ^ *"FCC ID BSH8YN106546 by Overhead Door Corporation". FCCID.io. Retrieved 20 October 2016.*
8. ^ *"Falling Garage Doors — A Crushing Concern". [Garage Door Child Safety](#).*
9. ^ *"Non Reversing Garage Door Openers a Hazard" (PDF). [U.S. Consumer Product Safety Commission](#).*
10. ^ *"Garage Door System Safety Guidelines". [Door & Access Systems Manufacturers Association International](#). Archived from the original on 2008-12-23.*
11. ^ [Garage Door Operators • CPSC](#)
12. ^ [Non-Reversing Automatic Garage Door Openers Are a Hazard • CPSC](#)
13. ^ [16CFR1211](#)
14. ^ *"Bill Text - SB-969 Automatic garage door openers: backup batteries". leginfo.legislature.ca.gov. [California Legislative Information](#). Retrieved 6 September 2019.*
15. ^ *"New California Law Could Cost You \$1000 in Fines". [Clark's Garage Door](#). 4 September 2019. Retrieved 6 September 2019.*
16. ^ *"California Mandates Battery Backup With All GDOS - Experts Cite Problems With The Legislation" (PDF). dasma.com. [DASMA](#). Retrieved 6 September 2019.*

External links

[edit]

- [Official FCC notification on garage opener frequencies \(PDF\)](#)
- [Garage Door Opener Safety Tips \(Washington Post\)](#)
- [Safety Commission Rules For Automatic Garage Door Openers - U.S. Consumer Product Safety Commission. CPSC, 1992](#)

About Overhead Door Company of Joliet

Photo

Image not found or type unknown

Photo

Image not found or type unknown

Photo

Image not found or type unknown

Photo

Image not found or type unknown

Photo

Image not found or type unknown

Photo

Image not found or type unknown

Things To Do in Will County

Photo

Image not found or type unknown

Old Joliet Prison

4.6 (1759)

Photo

Image not found or type unknown

Will County Historical Museum and Research Center

4.6 (23)

Photo

Joliet Area Historical Museum

4.6 (679)

Photo

Image not found or type unknown

Des Plaines River viewing point

5 (1)

Photo

Image not found or type unknown

Joliet Iron Works Historic Site

4.5 (378)

Photo

Lake Katherine Nature Center and Botanic Gardens

4.8 (3252)

Photo

Image not found or type unknown

Joliet Kicks on Route 66

4.1 (28)

Driving Directions in Will County

Driving Directions From Honorable Robert P Livas to Overhead Door Company of Joliet

Driving Directions From Honorable Edward A Burmila Jr to Overhead Door Company of Joliet

Driving Directions From Dollar General to Overhead Door Company of Joliet

Driving Directions From MainStay Suites Joliet I-80 to Overhead Door Company of Joliet

Driving Directions From First American Bank to Overhead Door Company of Joliet

Driving Directions From The Haley Mansion to Overhead Door Company of Joliet

Driving Directions From Clarion Hotel & Convention Center Joliet to Overhead Door Company of Joliet

https://www.google.com/maps/dir/Chillin%27+Products/Overhead+Door+Company+of+Joliet,+IL+61701/88.1045585,14z/data=!3m1!4b1!4m14!4m13!1m5!1m1!1sChIJmzmsnFhhDogRt1NO88.1045585!2d41.5055323!1m5!1m1!1sChIJLWV_oV9hDogRGyjUaaoTEjk!2m2!1d-88.106331!2d41.5069115!3e0

https://www.google.com/maps/dir/Honorable+Edward+A+Burmila+Jr/Overhead+Door+Company+of+Joliet,+IL+61701/88.0822783,14z/data=!3m1!4b1!4m14!4m13!1m5!1m1!1sChIJ4ykaz7dmDogRQ3QTx88.0822783!2d41.5244092!1m5!1m1!1sChIJLWV_oV9hDogRGyjUaaoTEjk!2m2!1d-88.106331!2d41.5069115!3e2

https://www.google.com/maps/dir/MainStay+Suites+Joliet+IL+61701/Overhead+Door+Company+of+Joliet,+IL+61701/@41.519399,-88.126183,14z/data=!3m1!4b1!4m14!4m13!1m5!1m1!1sChIJL5w_8HZhDogRRDwfq88.126183!2d41.519399!1m5!1m1!1sChIJLWV_oV9hDogRGyjUaaoTEjk!2m2!1d-88.106331!2d41.5069115!3e1

https://www.google.com/maps/dir/Will+County+Law+Library/Overhead+Door+Company+of+Joliet,+IL+61701/88.0843686,14z/data=!3m1!4b1!4m14!4m13!1m5!1m1!1sChIJ4ykaz7dmDogR54h2p88.0843686!2d41.5249227!1m5!1m1!1sChIJLWV_oV9hDogRGyjUaaoTEjk!2m2!1d-88.106331!2d41.5069115!3e3

Driving Directions From Old Joliet Prison to Overhead Door Company of Joliet

Driving Directions From Joliet Area Historical Museum to Overhead Door Company of Joliet

Driving Directions From Route 66 Park to Overhead Door Company of Joliet

Driving Directions From Illinois State Museum-Lockport Gallery to Overhead Door Company of Joliet

Driving Directions From Lake Renwick Heron Rookery Nature Preserve to Overhead Door Company of Joliet

Driving Directions From Joliet Iron Works Park to Overhead Door Company of Joliet

Driving Directions From Joliet Area Historical Museum to Overhead Door Company of Joliet

https://www.google.com/maps/dir/Fox+Museum/Overhead+Door+Company+of+Joliet,+IL/88.0548128,14z/data=!3m1!4b1!4m14!4m13!1m5!1m1!1sunknown!2m2!1d-88.0548128!2d41.5885338!1m5!1m1!1sChIJLWV_oV9hDogRGyjUaaoTEjk!2m2!1d-88.106331!2d41.5069115!3e0

https://www.google.com/maps/dir/Dellwood+Park/Overhead+Door+Company+of+Joliet,+IL/88.059683,14z/data=!3m1!4b1!4m14!4m13!1m5!1m1!1sunknown!2m2!1d-88.059683!2d41.5742712!1m5!1m1!1sChIJLWV_oV9hDogRGyjUaaoTEjk!2m2!1d-88.106331!2d41.5069115!3e2

https://www.google.com/maps/dir/Joliet+Iron+Works+Park/Overhead+Door+Company+of+Joliet,+IL/88.0800332,14z/data=!3m1!4b1!4m14!4m13!1m5!1m1!1sunknown!2m2!1d-88.0800332!2d41.5366495!1m5!1m1!1sChIJLWV_oV9hDogRGyjUaaoTEjk!2m2!1d-88.106331!2d41.5069115!3e1

https://www.google.com/maps/dir/Lincoln+Landing/Overhead+Door+Company+of+Joliet,+IL/88.0583755,14z/data=!3m1!4b1!4m14!4m13!1m5!1m1!1sunknown!2m2!1d-88.0583755!2d41.5902263!1m5!1m1!1sChIJLWV_oV9hDogRGyjUaaoTEjk!2m2!1d-88.106331!2d41.5069115!3e3

https://www.google.com/maps/dir/Riverwalk+Park/Overhead+Door+Company+of+Joliet,+IL/88.1553644,14z/data=!3m1!4b1!4m14!4m13!1m5!1m1!1sunknown!2m2!1d-88.1553644!2d41.7701442!1m5!1m1!1sChIJLWV_oV9hDogRGyjUaaoTEjk!2m2!1d-88.106331!2d41.5069115!3e4

88.106331!2d41.5069115!3e0

https://www.google.com/maps/dir/Lake+Katherine+Nature+Center+and+Botanic+Gardens+87.8010774,14z/data=!3m1!4b1!4m14!4m13!1m5!1m1!1sunknown!2m2!1d-87.8010774!2d41.6776048!1m5!1m1!1sChIJLWV_oV9hDogRGyjUaaoTEjk!2m2!1d-88.106331!2d41.5069115!3e2

Reviews for Overhead Door Company of Joliet

Overhead Door Company of Joliet

Image not found or type unknown

Owen McCarthy

(5)

I called the office just by chance to see if there was an available opening for a service call to repair a busted spring. Unfortunately I didn't catch the name of the person who answered, but she couldn't have been more pleasant and polite. She was able to get a tech to my house in an hour. I believe the tech's name was Mike and he too was amazing. He quickly resolved my issue and even corrected a couple of things that he saw that weren't quite right. I would recommend to anyone and will definitely call on Middleton for any future needs. Thank you all for your great service.

Overhead Door Company of Joliet

Image not found or type unknown

Kelley Jansa

(5)

We used Middleton Door to upgrade our garage door. We had three different companies come out to quote the job and across the board Middleton was better. They were professional, had plenty of different options and priced appropriately. The door we ordered came with a small dent and they handled getting a new panel ordered and reinstalled very quickly.

Overhead Door Company of Joliet

Image not found or type unknown

Andrea Nitsche

(4)

Scheduling was easy, job was done quickly. Little disappointed that they gave me a quote over email (which they confirmed was for labor and materials), but when they finished it was just over \$30 more. Not a huge deal, but when I asked why, I was told they gave me an approx cost and it depends on what is needed. I get that in general, however, they installed the door and I gave them my address and pics of the existing prior to getting a quote. I feel like they could have been more upfront with pricing. And just a heads

up, it was pricey... Had them change the weather stripping, from ringing my doorbell to pulling out my driveway when done was literally 20 mins, cost was just over \$260 ?

Overhead Door Company of Joliet

Image not found or type unknown

Hector Melero

(5)

Had a really great experience with Middleton Overhead Doors. My door started to bow and after several attempts on me fixing it I just couldn't get it. I didn't want to pay on something I knew I could fix. Well, I gave up and they came out and made it look easy. I know what they are doing not to mention they called me before hand to confirm my appointment and they showed up at there scheduled appointment. I highly recommend Middleton Overhead Doors on any work that needs to be done

Overhead Door Company of Joliet

Image not found or type unknown

Jim Chuporak

(5)

Received a notice the morning of telling me when to expect the men to come and put the door in. he was on time, answered all my questions, worked diligently in the cold. And did an absolutely awesome job. Everything was cleaned up, hauled away from the old door. I am extremely happy with the service I received from the first phone call I made through having the door put in. My wife and I are very, very happy with the door.

Ensuring Child And Pet Safety Near Moving Parts [View GBP](#)

Check our other pages :

- [Gathering Essential Tools For Simple DIY Checkups](#)
- [Inspecting Weather Seals For Energy Efficiency](#)
- [Identifying Potential Hazards Through Visual Inspection](#)
- [Removing Debris From Tracks For Better Operation](#)

Frequently Asked Questions

What safety features should be included in a garage door to protect children and pets?

Look for garage doors with sensors that detect movement or obstructions, auto-reverse mechanisms, pinch-resistant panels, and manual release handles. These features help prevent accidents by stopping the door if something is detected underneath it.

How can I teach my children about garage door safety?

Educate children on the dangers of playing near garage doors. Show them where the sensors are and explain how they work. Set clear rules like not standing under or near the door while it's moving and never trying to race it.

What steps should I take to pet-proof my garage door area?

Ensure your pet cannot reach any controls or wires by keeping them out of their reach. Regularly inspect the area for potential hazards like loose parts or exposed electrical components, and consider installing a fence or barrier if needed.

How often should I test my garage doors safety features to ensure they are working properly?

Test all safety features monthly. Check the auto-reverse function by placing an object under the closing path; it should reverse immediately upon contact. Also, regularly inspect sensors for alignment and function.

What precautions can installers take during installation to enhance child and pet safety around garage doors?

Installers should ensure proper alignment of sensors at least 6 inches above the floor, secure all wiring, verify that emergency releases are accessible but not easily manipulated by small hands or paws, and educate homeowners on operating procedures and maintenance checks.

Overhead Door Company of Joliet

Phone : +18157256077

City : Joliet

State : IL

Zip : 60436

Address : Unknown Address

Google Business Profile

Company Website : **<https://overheaddoorjoliet.com/garage-door-repair-romeoville.aspx>**

Sitemap

Privacy Policy

About Us